

# The Hainerberg E.S. Family Bulletin

Volume 11, Issue 5

<http://www.wies-esh.eu.dodea.edu/index.html>

February 2009



The mission of Hainerberg Elementary School is to provide exemplary educational programs that inspire and prepare all students for success in a global environment.



## UPDATE YOUR CALENDAR

**February 3, 4, 5**  
**CSP Accreditation Visit**  
(see page 7 for more information!)



**February 16**  
**Federal Holiday – No School**



**February 28**  
**Customer Satisfaction Survey ends**  
(see page 2 for more information!)

## HES STAFF INFORMATION

**PRINCIPAL** – Dr. Barbara Hickman  
**ASSISTANT PRINCIPAL** – Mrs. Wanda McKinzy

Names Removed

### OFFICE PHONE NUMBERS:

DSN 337-5160/5873 CIV 0611 705-5160/5873

FAX CIV 0611-74123

MAILING ADDRESS: Hainerberg Elementary School  
Unit 29647 Box 0086  
APO AE 09096-0086

### E-MAIL ADDRESS

[Wiesbadenes.principal@eu.dodea.edu](mailto:Wiesbadenes.principal@eu.dodea.edu)

### WEB ADDRESS:

[www.wies-esh.eu.dodea.edu](http://www.wies-esh.eu.dodea.edu)

### SCHOOL BUS OFFICE PHONE NUMBERS:

DSN 338-7143 CIV 0611380-7143,

Cellular phones: 0170-336-5018, 0171-559-0073

Names Removed

## Curriculum Standards

Hainerberg Elementary School uses the DoDEA curriculum standards to base instruction in all classrooms. DoDEA curriculum standards are based on the content standards produced by the National Council of Teachers of Mathematics, the National Council of Teachers of English, the International Reading Association, the National Research Council's National Science Education Standards and the National Council for Teachers of Social Studies.

If you are interested in learning more on the DODEA Standards please refer to <http://www.dodea.edu/curriculum/index.cfm> for all educational standards.

## CUSTOMER SATISFACTION SURVEY

The Department of Defense Education Activity (DoDEA) will administer its biennial Customer Satisfaction Survey (CSS) from November 1, 2008 through **February 28, 2009**. The CSS provides valuable feedback to DoDEA from its most important customers - parents and students - about the quality of education it provides and areas needing improvement.

All sponsors with students enrolled in DoD schools from Pre-kindergarten or SureStart through grade 12 may participate by completing a survey for each school in which they have a enrolled. Students in grades 4-12 may participate by completing separate surveys

The 2008 DoDEA Customer Satisfaction Survey represents a departure from tradition. Historically, teachers, educational support staff, students in grades 4-12, and sponsors for each child enrolled in DoD schools from pre-kindergarten through 12<sup>th</sup> grade were asked to complete the CSS. This year, parents and students will participate in the CSS while DoDEA Administrators, teachers, educational support staff will participate in a separate survey, the DoDEA Employee Satisfaction Survey, to be administered during March 2009. As with the CSS, participation in the DoDEA Employee Satisfaction Survey is voluntary and maximum participation is encouraged in order to obtain reliable and valid data.

The surveys take approximately 20 minutes to complete and are available online at [www.dodea.edu](http://www.dodea.edu) (click on the CSS graphic link). Parents who do not have access to the Internet should contact their child's school to determine other alternatives - such as using the school's computers.

Sponsors are asked to complete a survey for each child enrolled in a DoD school in grades pre-kindergarten/SureStart through grade 12. Information derived from the surveys will be used to improve planning efforts at all levels throughout DoDEA. Schools, districts and areas will use the survey results to gain insight into the satisfaction levels of sponsors and students, which is one of many measures used for future planning of programs and services DoDEA offers. The survey results will also be used to monitor the DoDEA Community Strategic Plan (CSP), which contains the strategic direction for DoDEA for the years 2006-2011.

For more information on the CSS, please call our school office at DSN: 337-5160/5873 German Civilian: 0611-705-5160/5873 or visit the DoDEA website at <http://www.dodea.edu/>.

For more information,  
check out our school  
website!

<http://www.wies-esh.eu.dodea.edu>

### **This is information from OSHNA- Overseas School Health Nurses Association Third Hand Smoke**

The effects of third hand smoke have now been show to be hazardous to babies and young children. Third hand smoke is the film that covers carpets, upholstery, walls, and clothing of places that smokers inhabit. Traces of the toxins can be detected in the blood and urine of children after they touch, mouth, and generally live in that area. You can listen to more about this research on a podcast from NPR Science Friday at <http://www.npr.org/search.php?text=science+friday> Search for the Science Friday program dated January 10 and titled "Is Third Hand Smoke a Hazard?". download all NPR Science Friday programming to your iPod or mp3 player and listen to the research at your leisure



## NOTES FROM THE MUSIC DEPARTMENT



Mark your calendars!! Tuesday, March 3 is the day, 6:30 pm is the time, and the Multi-purpose room (also known as the gym) is the place for the performance of the musical "Mighty Minds" by the Fifth graders.

Come see it all- singing, dancing, and acting

## "You Made the Grade" Program

Kids, did you make all A's and B's on your last report card?? Take your report card to AAFES main store and pick up your coupon book - a small reward for all of your hard work!!

## Helping Hands Reaching to Kabul

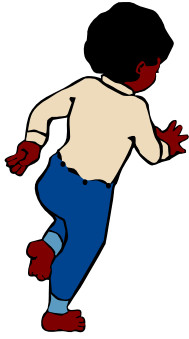
A third grade student's mother, just recently left for a year in Afghanistan. She's in touch with the teacher by e-mail. Some excerpts of the correspondence follow:

*My unit is supporting an orphanage and hospital in Kabul, and I was wondering if you think your class would be interested in helping me with this project. **The children here can use everything from clothes, shoes, toys, and school supplies all the way to basic medical supplies such as bandages and Neosporin.***

*The hospital is the Wazir Akbar Khan Hospital, a children's hospital according to my colleagues. This hospital actually distributes some of its supplies to several orphanages in the area.*

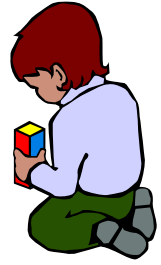
*I just want to let you know that I am very grateful that you immediately picked up on my request and spread the word. After seeing these children outside in the freezing cold, most of them without coats, many without socks and just wearing flip flops, all of them shivering, I just became convinced that I should try and get something done. Overall, despite their wretched situation, they are still so friendly and happy to see us.*

Third grade students are enthusiastic about helping these needy youngsters in Afghanistan. They'd like to extend the invitation to all of you reading this newsletter. Let's reach to Kabul with our helping hands. Bring or send in whatever you can spare to Room #256. Thanks!



Hainerberg E.S. will conduct its next  
**CHILD FIND SCREEN**  
For Children ages 3 to 5

February 19, 2009  
Thursday



Your preschool child is learning and growing in many areas that lead to being  
*“Ready to Learn”*

Sometimes children experience difficulty in their development that may cause problems when they start school.

**Personal-Social Development**

1. Has had great difficulties in Preschool/CDC/Day Care
2. Doesn't listen to adults
3. Has great difficulty playing with peers
4. Tantrums frequently in public
5. Has great difficulty separating from parents

**Communication**

1. Is difficult for most people to understand
2. Doesn't seem to understand directions
3. Language sounds much different than other children his/her age
4. Adults wonder if the child is hearing them

**Learning**

1. Doesn't seem to remember what was learned from one day to the next
2. Doesn't seem interested in learning
3. Doesn't want to participate in activities that involve learning and exploring

**Motor Skills**

1. Seems to fall often/is very clumsy
2. Has great difficulty holding utensils/holding writing or coloring tools
3. Doesn't seem to have strength when coloring/drawing

**Self-Help**

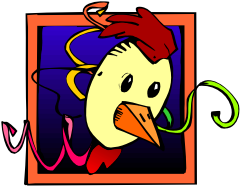
1. Is not potty trained and all others of the same age seem to be potty trained.
2. Does not put on even simple clothing items
3. Has great difficulty feeding himself

Do any of these concerns sound familiar?  
**DoDDS supports children with special needs.**



Call 705-5160  
to request an appointment!





# From the Host Nation Corner

**Karneval- Fastnacht – Fasching – What is it?** Carneval season is a time of wild fancy-dress parties and costume balls, which are open to the public. Carnival reaches its climax in big street processions with elaborately decorated floats, usually on Rosenmontag (Rose Monday). When is it? Officially it starts am Elften Elften elf Uhr elf (11<sup>th</sup> November at 11:11 a.m.) and continues in a fairly low-key way for about three months before the Tollen Tage (crazy days) which climax on Rosenmontag, the 42<sup>nd</sup> day before Easter. Carnival season is traditionally seen as a chance for people to go wild and let their hair down before Lent starts on Ash Wednesday. In the Christian church Lent is a serious time before Easter for fasting. Why the different names for it? Carnival is a regional festival and is celebrated in different ways according to different local traditions. It's known as:

Karneval in The Rhineland area; Fastnacht around the cities of Mainz and Wiesbaden (“fasting night”, or eve of Lent, the period of fasting); Fasnet in Swabia (south-west region of Germany) and in the south-west of the state of Bavaria; Fosnat in the Franken region (northern Bavaria), and as Fasching around the city of Munich and in Austria.

**What do people do?** Carnivals are held in southern German cities, and in the Rhineland cities of Mainz, Wiesbaden, Aachen, Bonn and Düsseldorf. The biggest and zaniest Karneval is in Cologne. Weiberfastnacht (women's carnival) is the Thursday before Rosenmontag, so this year January 31, and it is tradition that women are allowed to cut off the tie of any man within reach. Rosenmontag is not an official holiday but in areas of Germany that celebrate Karneval, workers usually get the day off. In Wiesbaden all stores will close at 13:00. On Rosenmontag German television devotes a lot of time to Karneval am Rhein. As described above, Karneval is associated with festivals of the Christian church. However, it goes back to pagan times, and was a way of driving out the evil spirits of winter and encouraging the coming of spring and good crops. Ugly masks worn for this purpose are still worn in carnival festivals in southern Germany. Karneval can be tracked back to pagan Roman festivals, which may explain why Cologne and Mainz, two ancient cities with Roman history, have such big carnivals. In the Middle Ages, Karneval gave the people a break from the tightly structured class system, as they were able to hide their social background behind imaginative masks and costumes. Poor people were able to mix with all other levels of society and share fun with them. In those days people would dress up as knights, damsels even priests, as a way of making fun of them. In a similar way, people these days sometimes wear masks - making fun of well-known politicians or celebrities.

(Notes compiled by D. Nutting)

## **Fasching Activities in Wiesbaden:**

On Saturday, February 21 at 10:33 the Kinderfest is starting in the Wiesbaden pedestrian zone and at 15:11 the children parade will go from Karstadt to the town hall.

The big parade in Wiesbaden is on Sunday, February 22 starting at 13:11 from Elsässer Platz, going through Rheinstrasse, Wilhelmstrasse to the Marketplace.

## **Fasching Activities in Mainz:**

The Jugendfastnachtszug (Youth Fastnacht Parade) in Mainz is on Saturday, February 21 starting at 14:11.

The big parade in Mainz is on Rosenmontag (Rose Monday), February 23 starting at 11:11.

So – dress up, wear a funny make-up – and have fun!

# S t u d e n t C o u n c i l

## Food Drive

In December, the Student Council held a non-perishable food drive and it was a huge success!

Boxes of food were donated to the Single Soldiers returning from deployment. They were able to stock their barracks.

More food was collected the following week and this food was donated to the Warrior Transition Unit at WAAF.

The students are very thankful to everyone who donated and helped with this project!



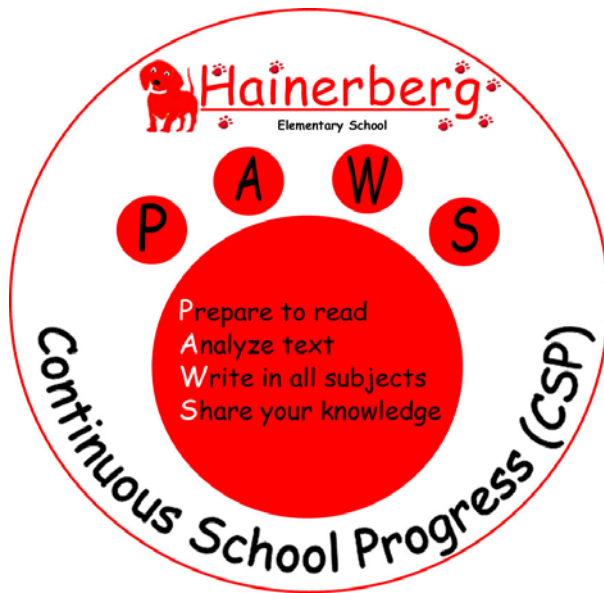
The Student Council has many plans for 2009. They are having a penny/euro cent drive to collect money for the WTU. Collection cans are in the main office and throughout the school. This project will be going on until Feb. 5<sup>th</sup>.

ON JANUARY 20<sup>TH</sup> THE STUDENT COUNCIL SPONSORED A HAT DAY. EVERYONE IN THE SCHOOL WORE A HAT TO SCHOOL TO CELEBRATE INAUGURATION DAY! ALL STUDENTS MADE A HUMAN CHAIN THROUGH THE SCHOOL AND CELEBRATE "HATS OFF TO A NEW PRESIDENT!"

Let's hear it for our Awesome Student Council!!



The Student Council created a bulletin board with the names of the STUDENTS who had or have a parent deployed. These "heroes" are just as important as their parents who serve far away from home.



## Continuous School Progress

**Goal 1:** All students will demonstrate improvement in analyzing text in all curricular areas.

**Goal 2:** All students will demonstrate improvement in written communication skills across the curriculum.

## What is Continuous School Progress or CSP?

CSP stands for Continuous School Progress. CSP is the accreditation process that our school utilizes in order to evaluate, reflect and improve student learning and teacher instruction.

An important date is just around the corner. On February 3, 4 and 5<sup>th</sup>, a team from AdvancEd will be visiting Hainerberg Elementary. They will be observing in classrooms and talking with teachers, students and parents. They will be documenting how our school meets the seven quality standards set forth by the AdvancEd Accreditation Organization.

Please look for a separate mailing of Parent FAQ's about the CSP process.

### FROM THE SCHOOL HEALTH OFFICE

IN SUPPORT OF THE FIFTH GRADE HUMAN GROWTH AND DEVELOPMENT CLASSES;

THANK YOU, HES PTO- MRS. MURRAY AND FAMILY- FOR THE PERSONAL ITEMS YOU PREPARED FOR EACH FIFTH GRADE STUDENT.

IT WAS VERY MEANINGFUL TO THEM AND THEY LOVED IT!

THANK YOU, MS. FRANKIE HILL, WAAF PHYSICAL THERAPIST, FOR THE SPINAL SCREENING OF OUR FIFTH GRADE STUDENTS.

BEATRICE ABOLEY-FRIEBE RN, M.P.H.

# Geography Club



Sponsor: 2<sup>nd</sup> grade teacher – Room 203

All students who are interested in learning more about our world, using maps and globes, seeing items from other countries, learning about holidays and customs from around the world, and using computer games are invited to join the Geography Club. It meets on four Wednesdays from 2:45 to 4:00 in Room 203. They should use the restroom between dismissal at 2:35 and 2:45, and wait outside room 203 until I return from walking my students to the main door at 2:35.

Parents are responsible for picking up any student at 4:00 who cannot walk home. Students will be walked to the main door at 4:00. Students not picked up by 4:00 will be waiting in the office. To attend, please return this signed permission slip. The next Geography Club sessions will meet on these Wednesdays: Jan. 28, Feb. 4, Feb. 11, Feb. 18, and Feb. 25.

---

Date: \_\_\_\_\_

I give permission for my child \_\_\_\_\_ to attend Geography Club from 2:45 to 4:00 on these Wednesdays:

Jan. 28   Feb. 4   Feb. 11   Feb. 18   Feb. 25.

At 4:00 my child will:

\_\_\_\_\_ walk home.

\_\_\_\_\_ be picked up by the parent or the adult listed here: \_\_\_\_\_

Phone: \_\_\_\_\_ Home room teacher: \_\_\_\_\_

Parent's signature: \_\_\_\_\_

# February Lunch Menu

Monday	Tuesday	Wednesday	Thursday	Friday
<b>2</b>	<b>3</b>	<b>4</b>	<b>5</b>	<b>6</b>
<b>Choose 1 Entrée</b>	<b>Choose 1 Entrée</b>	<b>Choose 1 Entrée</b>	<b>Choose 1 Entrée</b>	<b>Choose 1 Entrée</b>
BBQ Riblet Baked Chicken Drumsticks	WG Cheese Pizza Cheeseburger on WG Bun	Turkey Sausage Cheese Omelet	Hamburger on WG Bun Ham & Cheese on WW	Chicken Corn Dog Ravioli
<b>Choose 2-5 Side Items</b>	<b>Choose 2-5 Side Items</b>	<b>Choose 2-5 Side Items</b>	<b>Choose 2-5 Side Items</b>	<b>Choose 2-5 Side Items</b>
Broccoli Applesauce Fruited Jell-O Whole Wheat Roll Milk	Carrots & Celery w/FF/Dip Chilled Pears Fruited Jell-O Milk	Blueberry Waffles Baked Tater tots Banana Milk	Baked Sweet Potato Fries Fruit Cup Fruited Jell-O Ice Cream Milk	Garden Side Salad Chilled Peaches Whole Grain Roll Chocolate Chip Muffin Milk
<b>9</b>	<b>10</b>	<b>11</b>	<b>12</b>	<b>13</b>
<b>Choose 1 Entrée</b>	<b>Choose 1 Entrée</b>	<b>Choose 1 Entrée</b>	<b>Choose 1 Entrée</b>	<b>Choose 1 Entrée</b>
Mini Chicken Sandwich Beef Frank on WG Bun	Pepperoni Pizza Grilled Turkey & Cheese	Soft Taco w/cheese Chicken Quesadilla	Spaghetti w/meat sauce Chef Salad	Baked Chicken Fries Baked Baja Fish Sticks
<b>Choose 2-5 Side Items</b>	<b>Choose 2-5 Side Items</b>	<b>Choose 2-5 Side Items</b>	<b>Choose 2-5 Side Items</b>	<b>Choose 2-5 Side Items</b>
Baked Beans Garden Side Salad Orange Wedges Fruited Jell-O Milk	Seasoned Corn Garden Side Salad Fruit Cup Fruited Jell-O Milk	Carrots, Broccoli & Cauliflower Chilled Pears Blueberry Muffin Fruited Jell-O Milk	Green Beans Chilled Fruit Cocktail Garlic Toast Fruited Jell-O Milk	Pasta Salad Cucumber & Carrot Sticks Banana Dolphin Crackers Milk
<b>16</b>	<b>17</b>	<b>18</b>	<b>19</b>	<b>20</b>
<b>Choose 1 Entrée</b>	<b>Choose 1 Entrée</b>	<b>Choose 1 Entrée</b>	<b>Choose 1 Entrée</b>	<b>Choose 1 Entrée</b>
-No School-	Cheese Pizza Baked Chicken Tenders w/Roll	Chicken Alfredo w/Pasta Ham & Cheese Sandwich	Cheese Pizza Dippers Yogurt & ½ Grilled Cheese	Cheeseburger Mac Chef Salad
<b>Choose 2-5 Side Items</b>	<b>Choose 2-5 Side Items</b>	<b>Choose 2-5 Side Items</b>	<b>Choose 2-5 Side Items</b>	<b>Choose 2-5 Side Items</b>
	Green Beans Chilled Peaches Garden Side Salad Fruited Jell-O Milk	Cauliflower & Carrots Chilled Pears Fruited Jell-O Mini Pretzels Milk	Fresh Carrot Sticks w/FF Dip Apple Quarters Goldfish Pretzels Fruited Jell-O Milk	Garden Salad Fruit Cup/Fruited Jell-O Animal Crackers Milk

WW-Whole Wheat; WG-Whole Grain; FF-Fat Free; RF-Reduced Fat; LF-Low Fat

Students can always order a salad vs. the Entrée

For more information, please click on the link:

<http://odin.aafes.com/nutrition/menus.htm>

